

חיפוי חיצוני בקוריאן דופונט



Corian® Exteriors for a residential building in XV arrondissement in Paris, France;
project by Nakache & Oriuela Architectes; photo Benoit Fougierol, all rights reserved.

- לקוריאן באירופה מעל 20 שנות ניסיון בחיפוי חיצוני של מבנים.
- לקוריאן בארץ מעל 20 שנות ניסיון בשימוש חיצוני – מטבחי חוץ, מבנים נמוכים, גדרות.



70%- מינרל טבעי:

אלומיניום הידרוקסיט

לדו פונט יש 4 מחצבות שונות לחציבת מינרל.

25%- 30%- אקריליק: חומר פלסטי קשיח, אינו סופח אליו דבר - "אציל", עמיד לכימיקלים ומאד יקר.

עד 5%- פיגמנט : משמעותי מאד בגוונים מורכבים, עם פיגמנט עשיר יותר ועם חלקיקים.



יתרונות של חיפוי חיצוני בקוריאן

נראות

לוחות גדולים במיוחד.

חיבורים מינימליים.

חומר מוצק, חלק, לא נקבובי, לא סופג כלום.

33 גוונים תחת אחריות.

לוח גמיש.

טרמופורמינג – עיצוב הלוחות בחום.

גמישות עיצובית עם מראה ייחודי ואחיד - חיבורים בלתי נראים בין הפנלים



תכונות מכניות

עמידות בתנאי מזג אויר קיצוניים.
 לוחות חזקים במיוחד ועמידים בפני פגיעות
 עמידות בקרני UV – אינו משנה גוון
 עמידות בפני כימיקלים
 עמידות בשוק טרמי ובקיפאון.

תחזוקה

קל לניקוי, עלות תחזוקה נמוכה, קל
 משקל, "שלום לגרפיטי", חומר ירוק וחוסך
 אנרגיה.



מידות של הלוחות

Standard sheet size

- Width
 - 760mm (30'')
 - 930mm (36'')
 - 1300mm (48'')
 - 1500mm (60'')
- Length
 - 3658mm (144'')



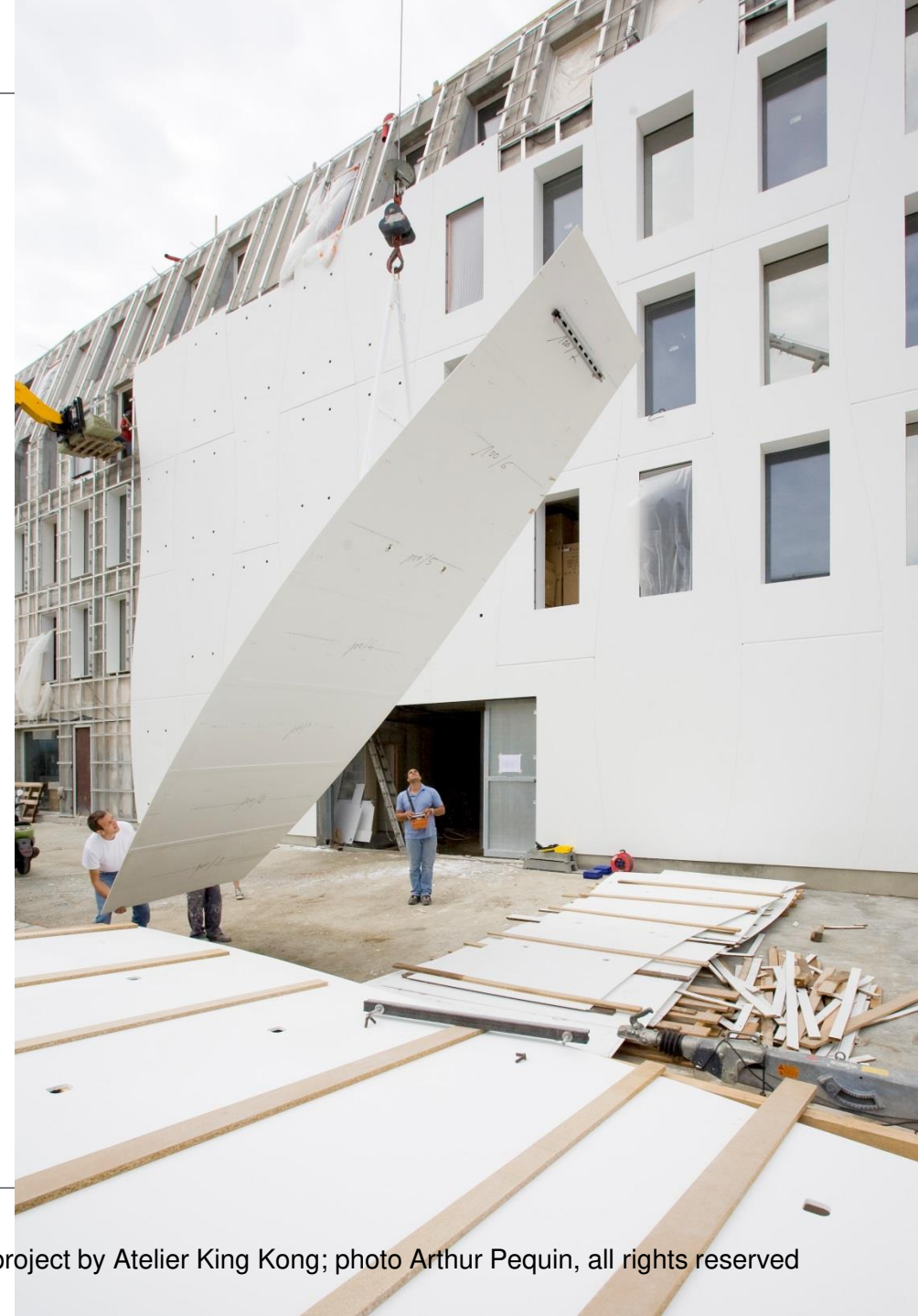
WIDE SHEET FORMAT
STANDARD FR GRADE

Standard sheet thickness

- 12mm (1/2'')

Seaming of sheets allows wider dimensions

- 5500x3500



Property	Typical Result	Test
Structural		
Specific Gravity	1750 kg/m ³	
Areal Weight	21,5 kg/m ² (12 mm sheet) 33,3 kg/m ² (19 mm sheet)	
Impact	Category 1	ISO 7892
Flexural Modulus	8040 - 9220 MPa	DIN EN ISO 178
Flexural Strength	57 - 74 MPa	DIN EN ISO 178
Elongation at break	0,76 - 0,93%	DIN EN ISO 178
Tensile Strength	41 MPa (6000 psi)	ASTM D638
Tensile Modulus	10.4 MPa (1,5 x 10 ⁶ psi)	ASTM D638
Tensile Elongation	0,4% minimum	ASTM D638
Izod Impact (Notched Specimen)	(0,15 N-m/cm) (0,28 ft.-lbs./in.) of notch	ASTM D256 (Method A)
Impact Test Resistance	15 N-m (130 in.-lb.)	ASTM D5420
Fire Performance		
Euroclass - Reaction to fire	B-s1, d0 - FR and custom grade C-s1, d0 - Standard grade	EN 13501-1

עמידות בפני אש גלויה

בעל תקן Euro class B,S1,d0 - תגובה לאש

הקוריאן הוא מעכב בעירה!

מעל 150 פרוייקטים שבוצעו באירופה, המזרח התיכון ואפריקה

20 שנות ניסיון בעולם בחיפוי מבנים

בנייה ירוקה, נותן נקודות למבנה

תקנים אירופאים מחמירים של חיפוי מבנים לגובה

European: ETA, European Technical
Approval ETA-13/037 Dibt Germany

France: Avis Technique ATEC 2/11-1472, seismic addendum

UK: CWCT 2012/050 certification incl.
Water tightness, impact etc.

Poland: Aprobata Techniczna ITB AT-15-2465/2012

Efectis

CORIAN® DESIGN

עמאן
מוצרי אסות למטבח ולאמבט



עיצוב בטרמופומינג

עיבוד ועיצוב החומר בחום בשיטת טרמופומינג
2D & 3D



Thermoforming Procedure





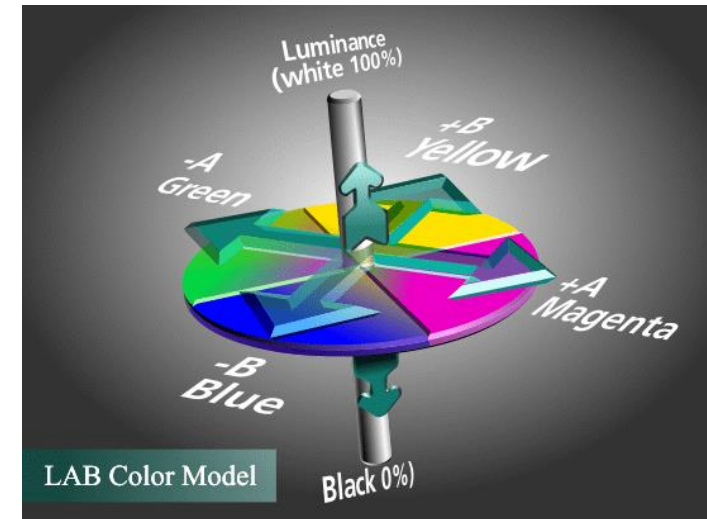
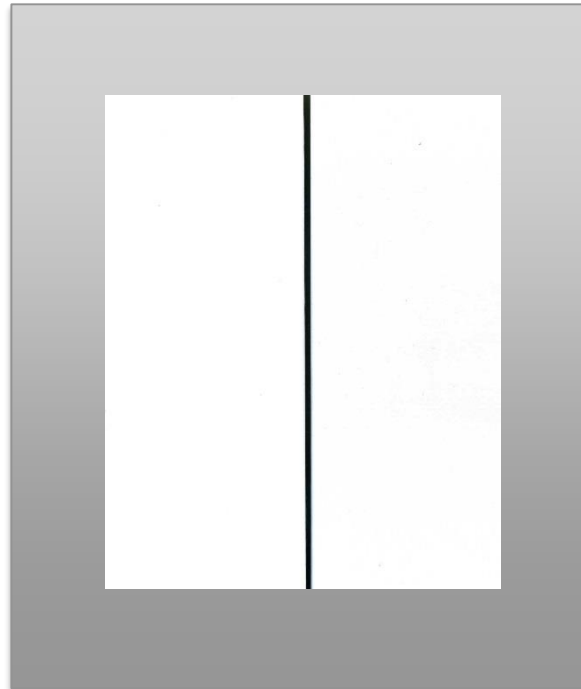
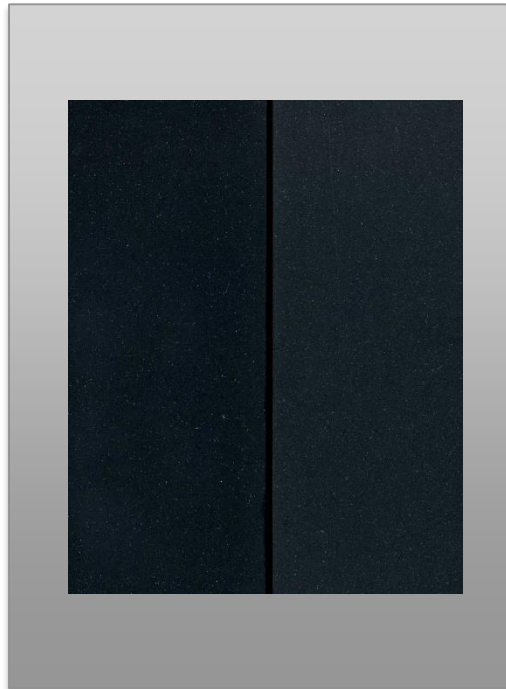
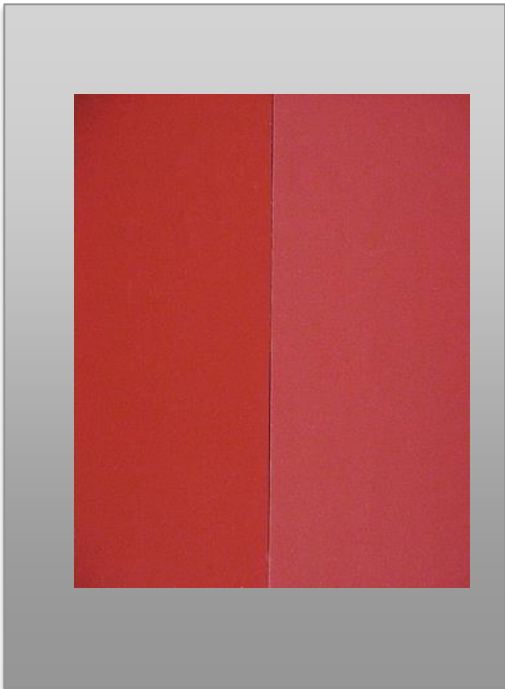
ΔE - (*Delta E, dE*) The measure of change in visual perception following UV exposure.

Delta E is a metric for understanding how the human eye perceives color difference.

Color Change ~ 10 Δe_{ab} units after 10 years

Color Change ~ 5 Δe_{ab} units after 10 years

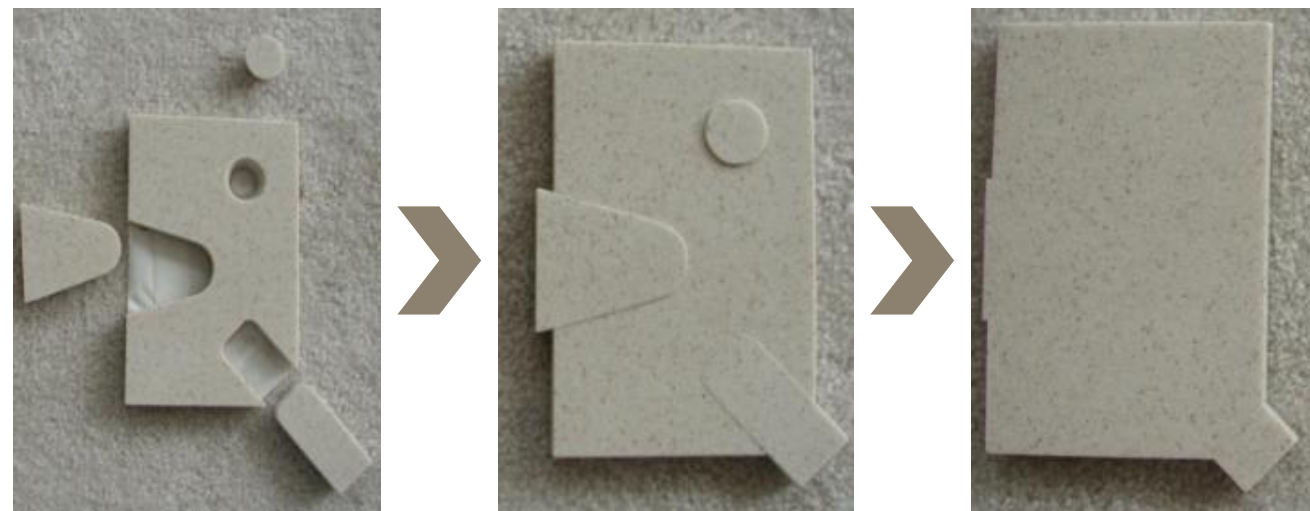
Color Change ~ 2 Δe_{ab} units after 10 years



Delta E	Perception
≤ 1.0	Not perceptible by human eyes.
1 - 2	Perceptible through close observation.
2 - 10	Perceptible at a glance.
11 - 49	Colors are more similar than opposite
100	Colors are exact opposite

- Corian® Solid Surface can be restored and repaired.
- Stains do not permeate the surface. Since the color runs all the way through the material, marks and scratches can be removed to restore the surface to its original condition.
- Most damage can be repaired on-site.

Sections can be removed and replaced without replacing the entire application.



- Easy cleaning fascia,
- Low cost maintenance,
- Cost effective life cycle value,
- Easy Graffiti cleaning





- Low-emitting products; low-VOC content.
- Non-toxic and non-allergenic to humans
- Non-porous: Does not support growth of mold and mildew.
- May contain a percentage (in weight) of pre-consumer recycled material.
- There are two types of recycled content:
 - Pre-consumer
 - Post-consumer
- Reduce solid waste by repurposing or reusing...

PRE-CONSUMER RECYCLED CONTENT

קוריאן ניתן למחזור, אינו פולט חומרים מסוכנים בעת שימוש או עיבוד, חוסך בשימוש אנרגיה לקירור/חימום מבנה



Technical

European: ETA,

Approval ETA-13/037 Dibt Germa



1742,

France: Avis Technique ATEC 2/

seismic addendum



UK: CWCT 2012/050 certificatio

incl.

Water tightness, impact etc.



40 גוונים מתאים לחיפוי חיצוני



DESIGNER WHITE



MODERN WHITE



WHITE JASMINE



WHITECAP



RICE PAPER



ABALONE



GLACIER WHITE



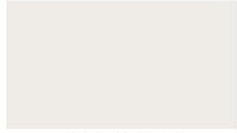
CAMEO WHITE



ANTARCTICA



GLACIER ICE



LIGHT ASH



ASPEN



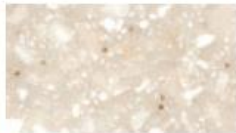
BISQUE



VANILLA



BONE



SAVANNAH



AURORA



SAHARA



EVEREST



LINEN



NEUTRAL CONCRETE



WARM GRAY



FOSSIL



RAFFIA



MINT ICE



DUSK



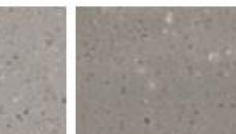
BLUE PEBBLE



WILLOW



DOVE



ASH CONCRETE



CANVAS



CONCRETE



DOESKIN



SERENE SAGE



DEEP TITANIUM



DEEP ANTHRACITE



DEEP NOCTURNE

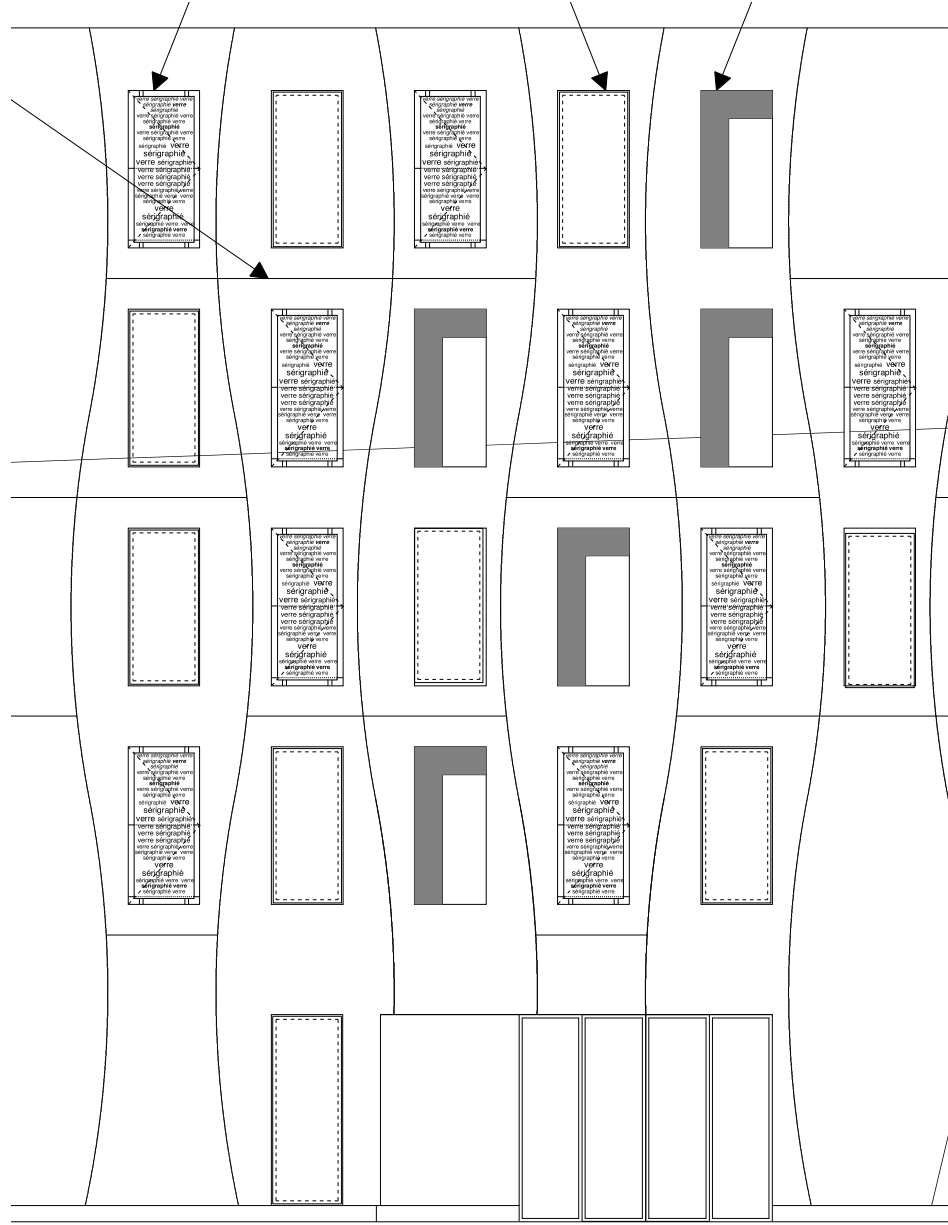


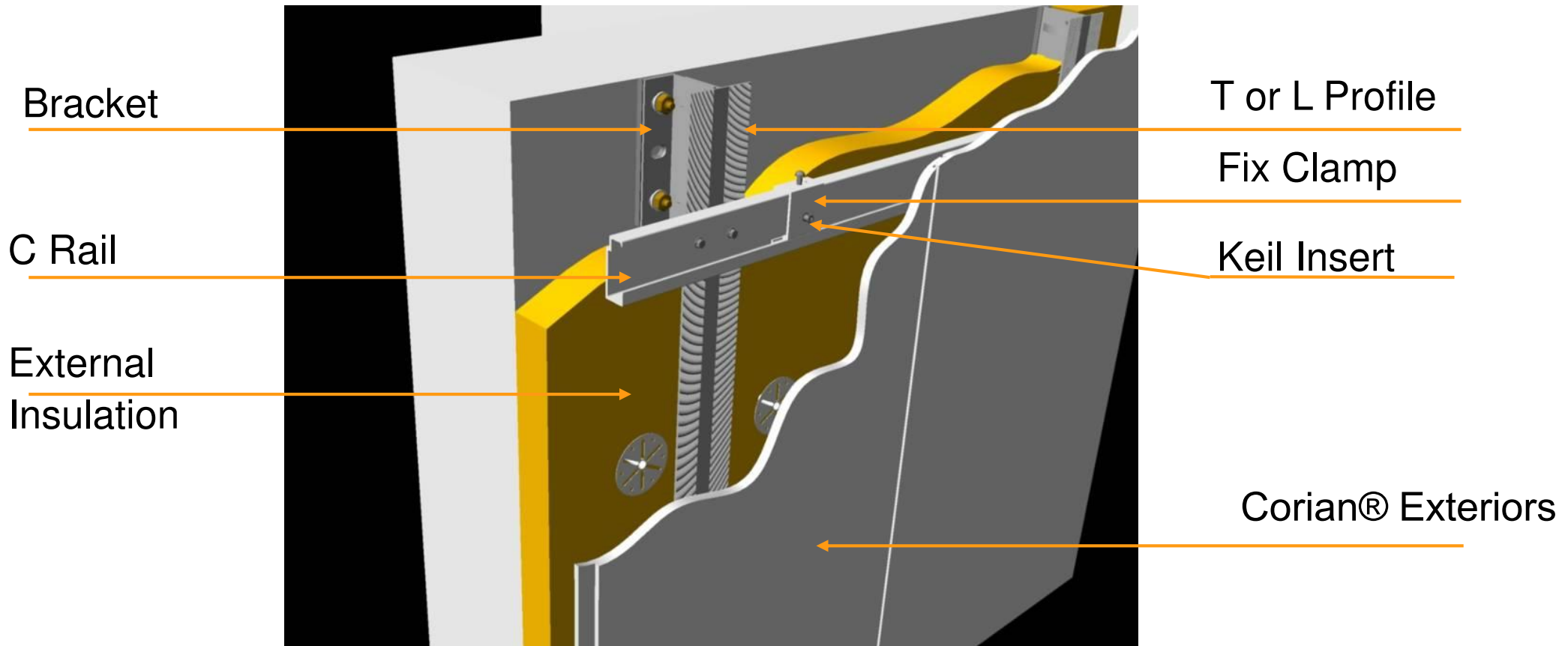
DEEP NIGHT SKY

Corian® Exteriors

Technical Information

Section 3





חיבורים בין הפנלים נעשים בשיטה של תליה יבשה

Figure G 1 - Open joint

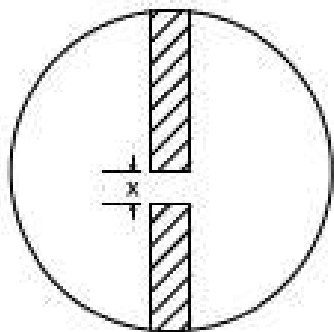


Figure G 2 - Overlap joint (1/2 - 1/2)

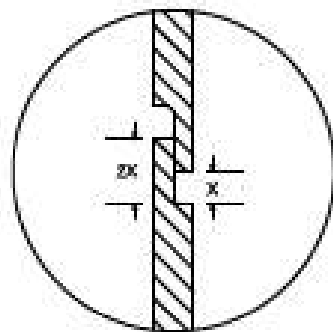
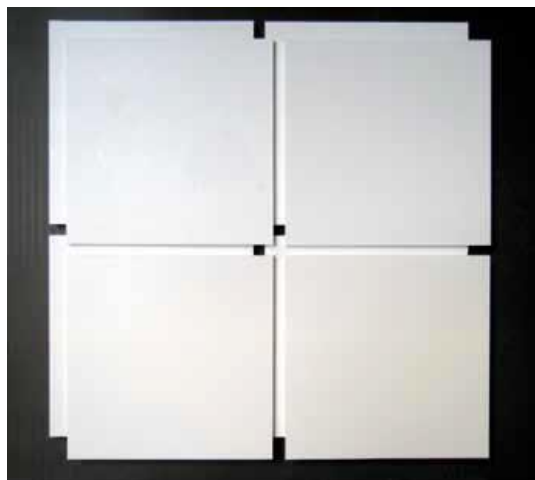
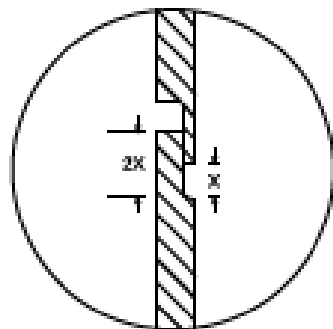
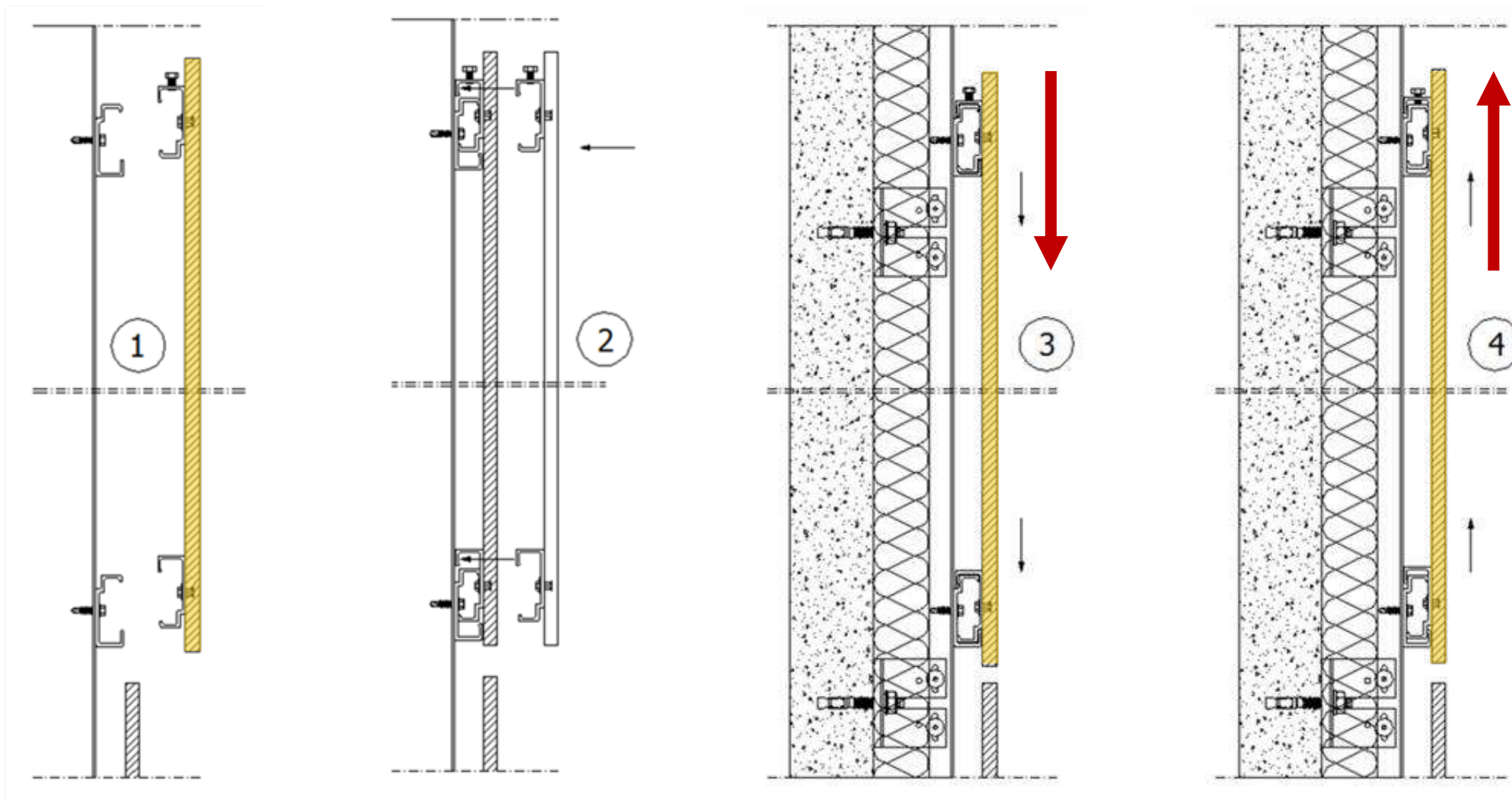


Figure G 4 - Overlap joint (1/4 - 1/4)



As rule of thumb, a variation in length and width of 3 mm/m (based on a temperature variation of 80°C) should be considered into the design

Sheet Size	X
760mm	2.28mm
930mm	2.79mm
1300mm	3.9mm
1500mm	4.5mm
3658mm	10.97mm



Corian® Exteriors for the façade of the pavilion of Anansi playground in Utrecht, Netherlands;
project by Mulders vandenBerk Architecten; photo Roel Backaert, all rights reserved.

פרויקטים נבחרים

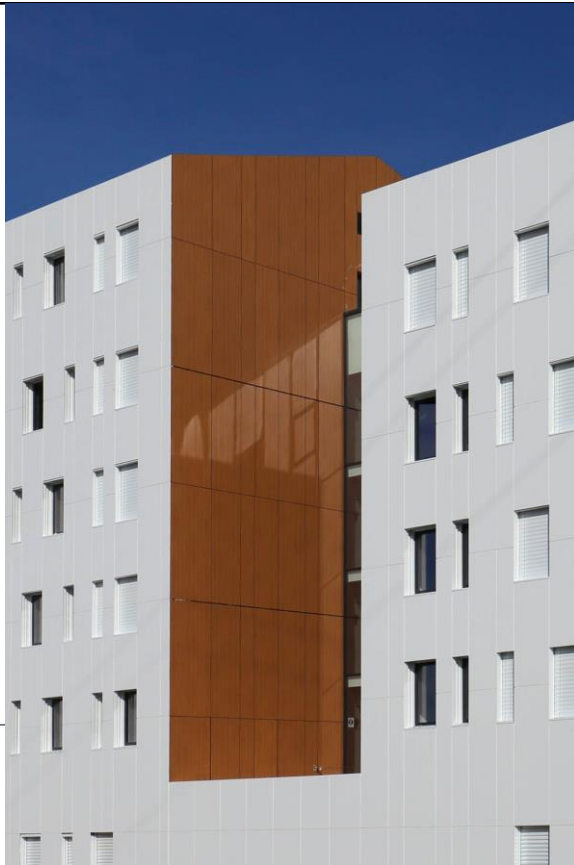


The beauty of Corian® Exteriors on classic applications

STANDARD SHEETS

Project name	School Georges Frêche
Localisation	Montpellier, France
Architect	Tourre Sanchis
Installer	AEA
Colour	Glacier White
Size	3500sqm
Completion date	2016

Pictures: Jean-Luc Girod

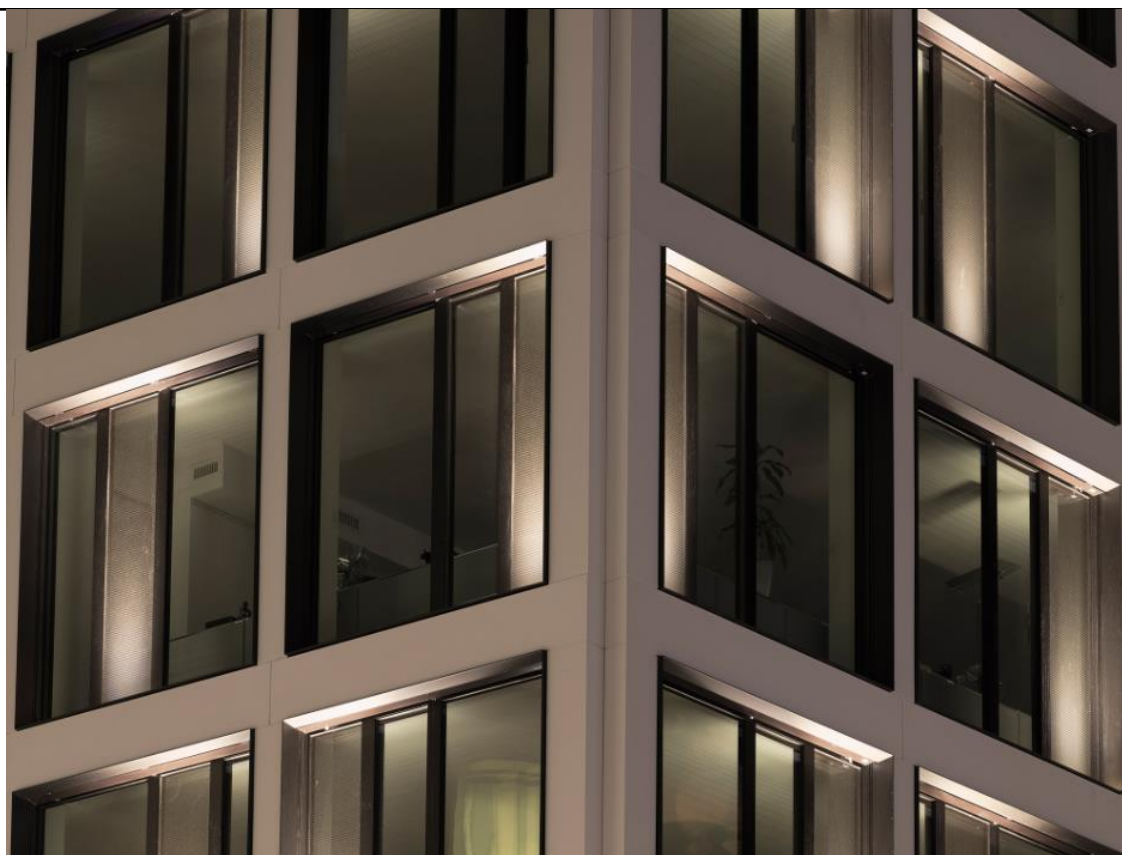


Project name	Office SILEX
Localisation	Lyon, France
Architect	AIA Architecture
Installer	Image
Colour	Glacier White
Size	2200 sqm
Completion date	2017



Corian® Exteriors for the facade of Silex office building, Lyon, France; project by AIA Architecture; photo Kevin Dolmaire, all rights reserved.

Project name	Private Housing
Localisation	Geneva, Switzerland
Architect	Guenin Atelier d'Architectures
Installer	CREA Diffusion
Colour	Glacier White
Size	700 sqm
Completion date	2018



Corian® Exteriors for the facade of a residential building in Switzerland (15 rue de la Confédération Geneva); project by GAA - Guenin Atelier d'Architectures; photo Swen Sack, all rights reserved.

Project name	Housing Stack Breda
Localisation	Breda, The Netherlands
Architect	Marius Van Den Wildenberg
Installer	Drooghmans
Colour	Glacier White
Size	8000 sqm
Completion date	2012



Corian® Exteriors for the Stack residential building project in Breda, The Netherlands; project by architect Marius van den Wildenberg; photo Corian® Exteriors.



Project name	Offices Cité Régionale de l'Environnement
Localisation	Pantin, France
Architect	Fassio et Viau
Installer	AEA
Colour	Glacier White
Size	2300 sqm
Completion date	2013



Corian® Exteriors for the façade of the Cité Régionale de l'Environnement in Pantin, France; project by architects Olivier Fassio and Jean-Brice Viaud; photo Corian® Exteriors.



Project name	Private House
Localisation	Zagreb, Croatia
Architect	DVA Arhitekta
Installer	REFLEX d.o.o.
Colour	Glacier White
Size	800 sqm
Completion date	2010



Project name	Private House
Localisation	Barcelona, Spain
Architect	Estudio A-cero
Installer	URBANA IDR
Colour	Glacier White
Size	1125 sqm
Completion date	2014



Corian® Extensio for the façade of a private villa in Barcelona, Spain; project by Estudio A-cero; photos by Estudio A-cero/Marcos Domingo, all rights reserved, all rights reserved.

Project name	NHS Chesterfield Royal Hospital
Localisation	Chesterfield, UK
Architect	<i>The Manser Practice</i>
Installer	Unique Fabrications
Colour	Glacier White
Size	1000 sqm
Completion date	2018



Corian® Exteriors for the facade of the NHS Macmillan Unit at the Chesterfield Royal Hospital (Chesterfield, UK), project by The Manser Practice; photo by Allan Crow, Hufton + Crow, all rights reserved.



Project name	MENAI Science Park
Localisation	Gaerwen, Wales, UK
Architect	FaulknerBrowns Architects
Installer	Unique Fabrications
Colour	Glacier White
Size	1300 sqm
Completion date	2017



Corian® Exteriors for the facade of Menai Science Park in Gaerwen, Wales; project by FaulknerBrowns Architects, photo courtesy of CD (UK) Ltd., all rights reserved.



Light Effects

SUNSCREENS / SUNSHADE / VENTS

Project name	Headquarter of DuPont company
Localisation	Wilmington, Delaware, USA
Architect	<i>AECOM</i>
Installer	
Colour	Glacier White
Size	200 sqm
Completion date	2016

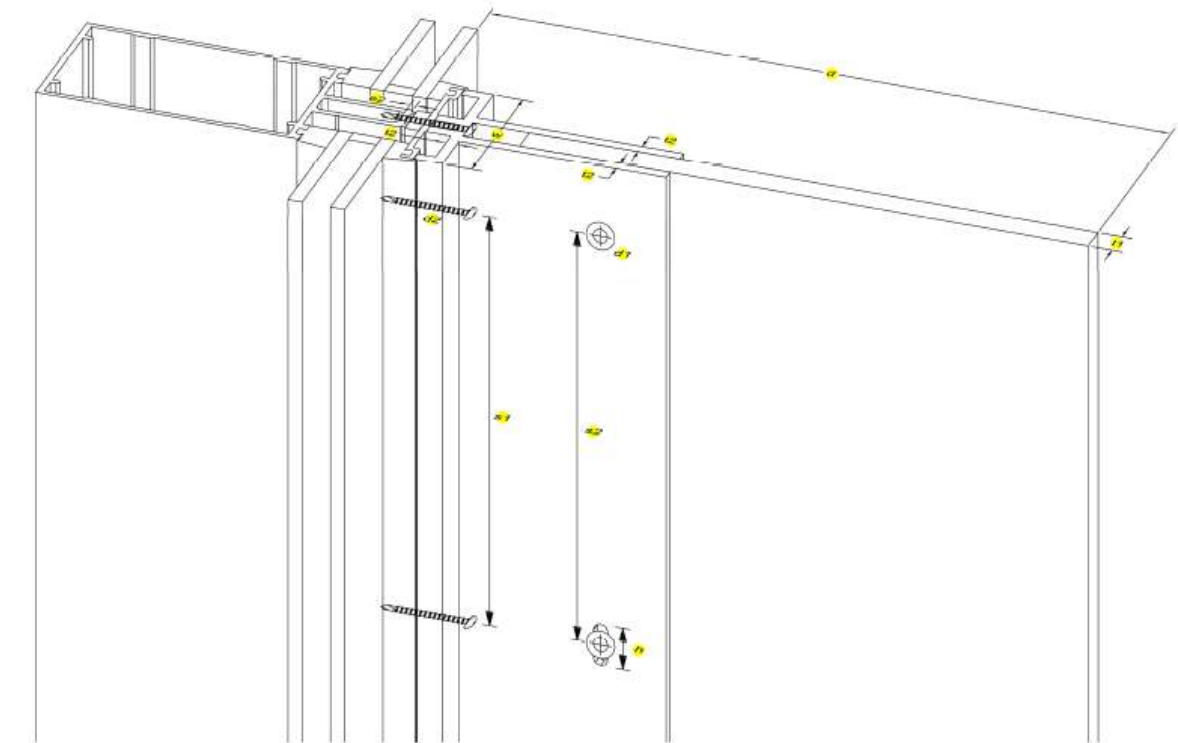


Image 2: Isometric view of curtain wall system with aluminum wall at face of mullion.



Project name School Philippe Lamour

Localisation Nîmes, France

Architect MDR Architectes

Installer AEA

Color GW

Size 2300sqm

Completion date 2016

Pictures Jean-Luc Girod

35

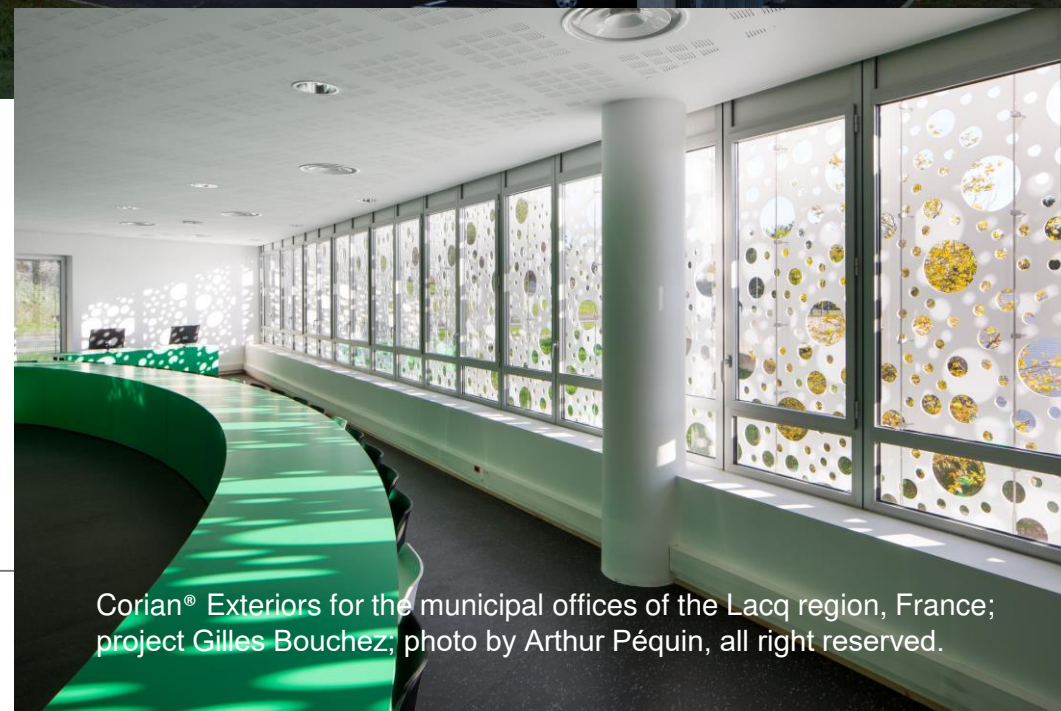


Project name	Social Housing, Croix Nivert
Localisation	Paris, France
Architect	Nakache Orihuela Architectes
Installer	CREA Diffusion
Colour	Glacier White
Size	660 sqm
Completion date	2018



Corian® Exteriors for a residential building in XV arrondissement in Paris, France; project by Nakache & Orihuela Architectes; photo Benoit Fougeirol, all rights reserved

Project name	Public Bulding
Localisation	Mourenx, France
Architect	Gilles Bouchez
Installer	Crea Diffusion
Colour	Glacier White
Size	350sqm
Completion date	2012



Project name	Headquarters of Omnicos company
Localisation	Bagnolo Cremasco, Italy
Architect	Beppe Riboli Studio
Installer	Alpha
Colour	Glacier White
Size	900 sqm
Completion date	2018



Corian® Exteriors for the headquarters of Omnicos company in Bagnolo Cremasco, Italy; project by Beppe Riboli Studio; photo courtesy of Beppe Riboli Studio, all rights reserved.



Your Imagination is the Only Limit

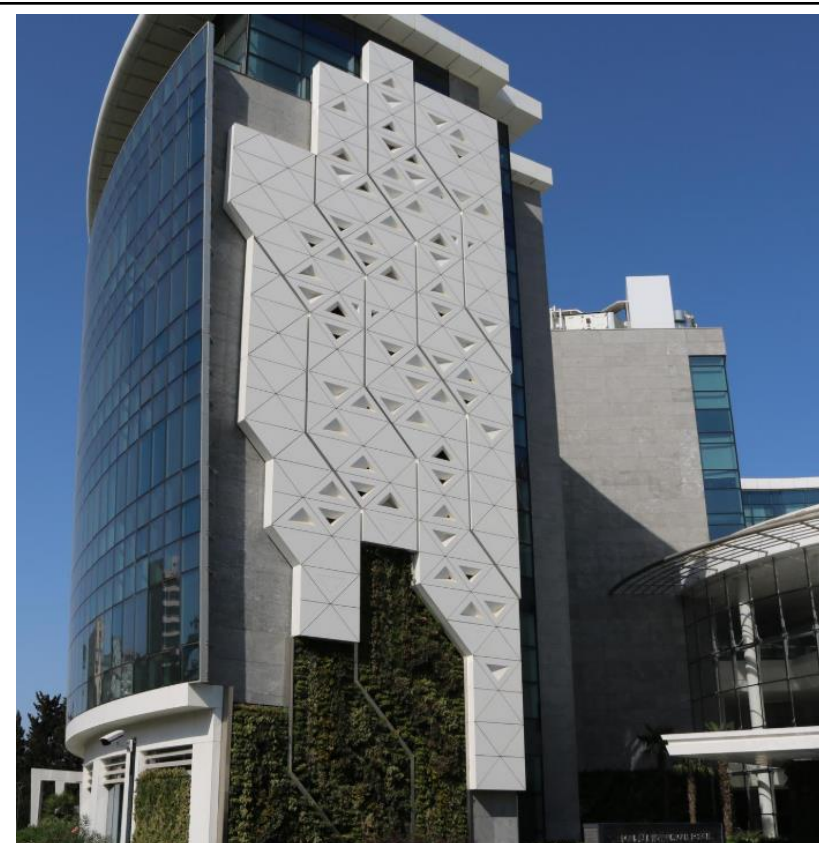
CREATIVE CLADDING

Project name	Hotel _ Seekoo
Localisation	Bordeaux, France
Architect	Atelier King Kong
Installer	AEA
Colour	Glacier White
Size	1000 sqm
Completion date	2007



Corian® Exteriors for the facade of Seeko'o hotel in Bordeaux, France; project by Atelier King Kong; photo Arthur Pequin, all rights reserved

Project name	Bona Dea International Hospital
Localisation	Baku, Azerbaijan
Architect	PALITRA MMC
Installer	Palitra
Colour	Glacier White
Size	6000 sqm
Completion date	2018



Corian® Exteriors for the façade of Bona Dea International hospital in Baku, Azerbaijan; photo courtesy of Palitra, all rights reserved



Project name	Residential building Varna Wave
Localisation	Varna, Bulgaria
Architect	STARH
Installer	Komfort Partners
Colour	Glacier White
Size	1000 sqm
Completion date	2018



Corian® Exteriors for the façade of Varna Wave residential building in Varna, Bulgaria project by STARH; photo by 3inSpirit, all rights reserved.



Project name	Offices _ Shift
Localisation	Paris, France
Architect	Axel Schoenert Architecture
Installer	Crea Diffusion
Colour	Glacier White
Size	300 sqm
Completion date	2018

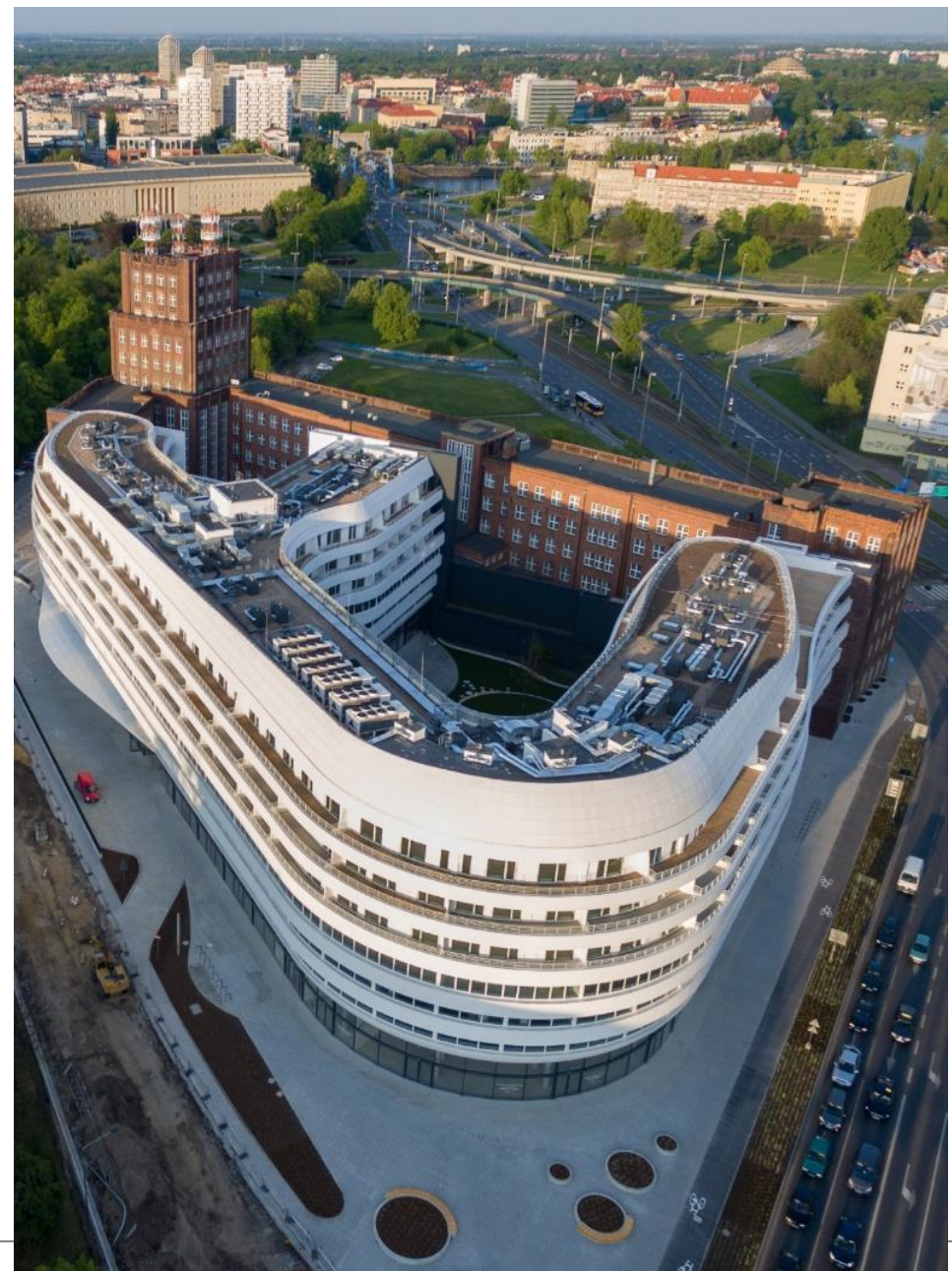


Corian® Exteriors for the façade of the Shift building in Paris, France; project by Axel Schoenert Architectes; photo courtesy of Axel Schoenert Architectes, all rights reserved.

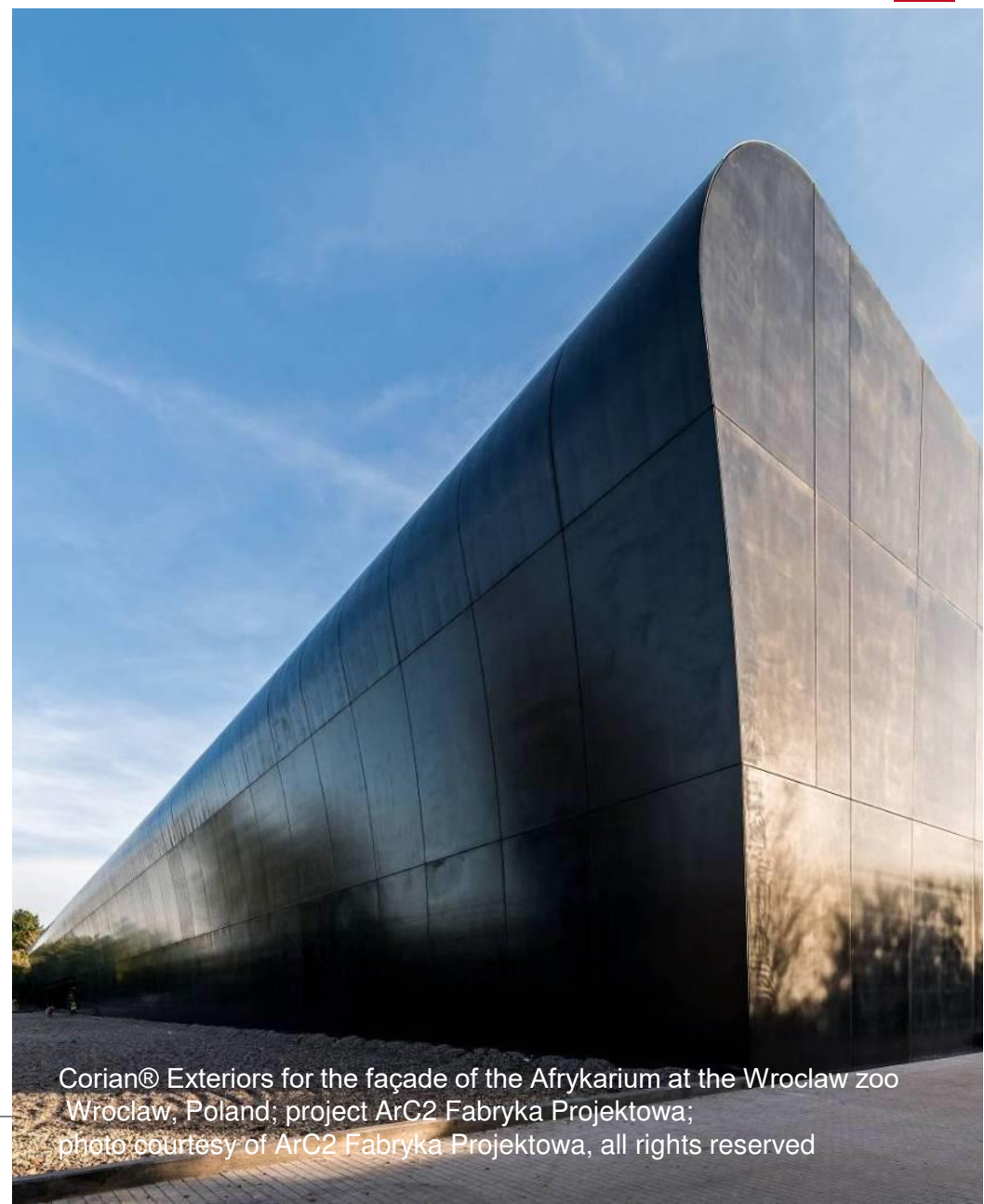
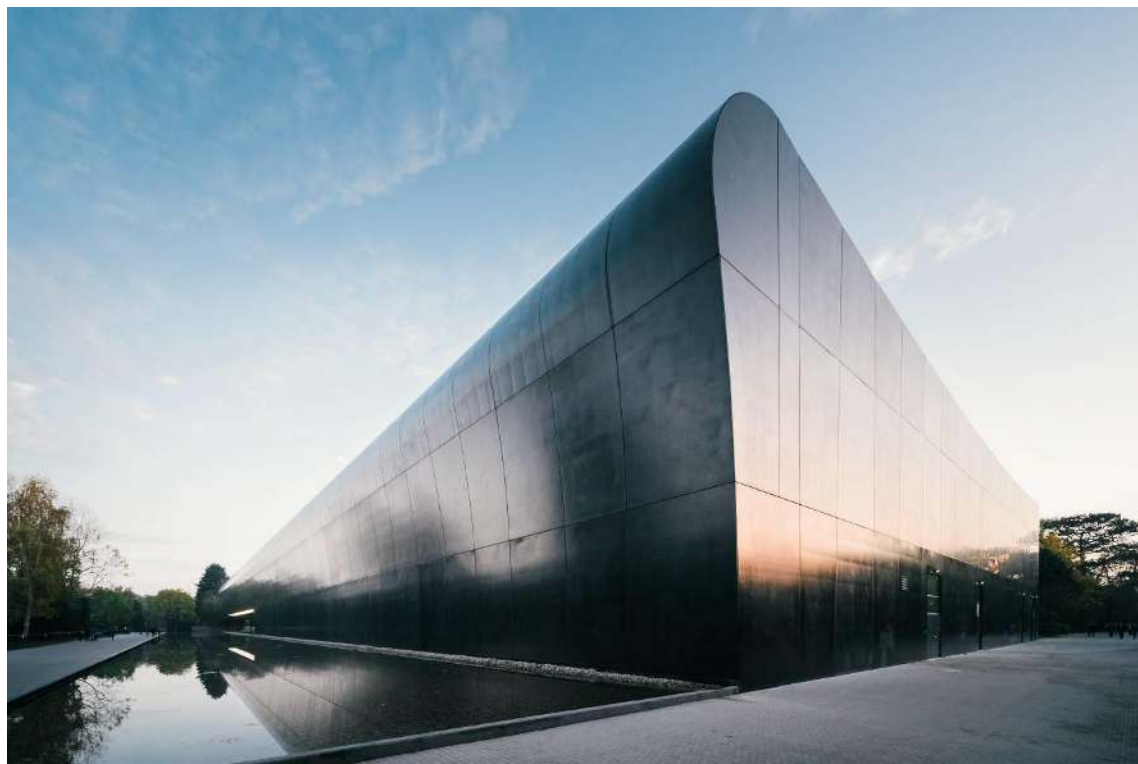
Project name	Ovo Wroclav Centre
Localisation	Wroclaw, Poland
Architect	Gottesman-Szmelcman Architecture
Installer	A&B Consulting
Colour	Glacier White
Size	6200 sqm
Completion date	2016



Corian® Exteriors for the façade of the OVO Wroclav centre in Wroclaw, Poland; project by Gottesman-Szmelcman Architecture; photo by Kamil Czaja, all rights reserved.

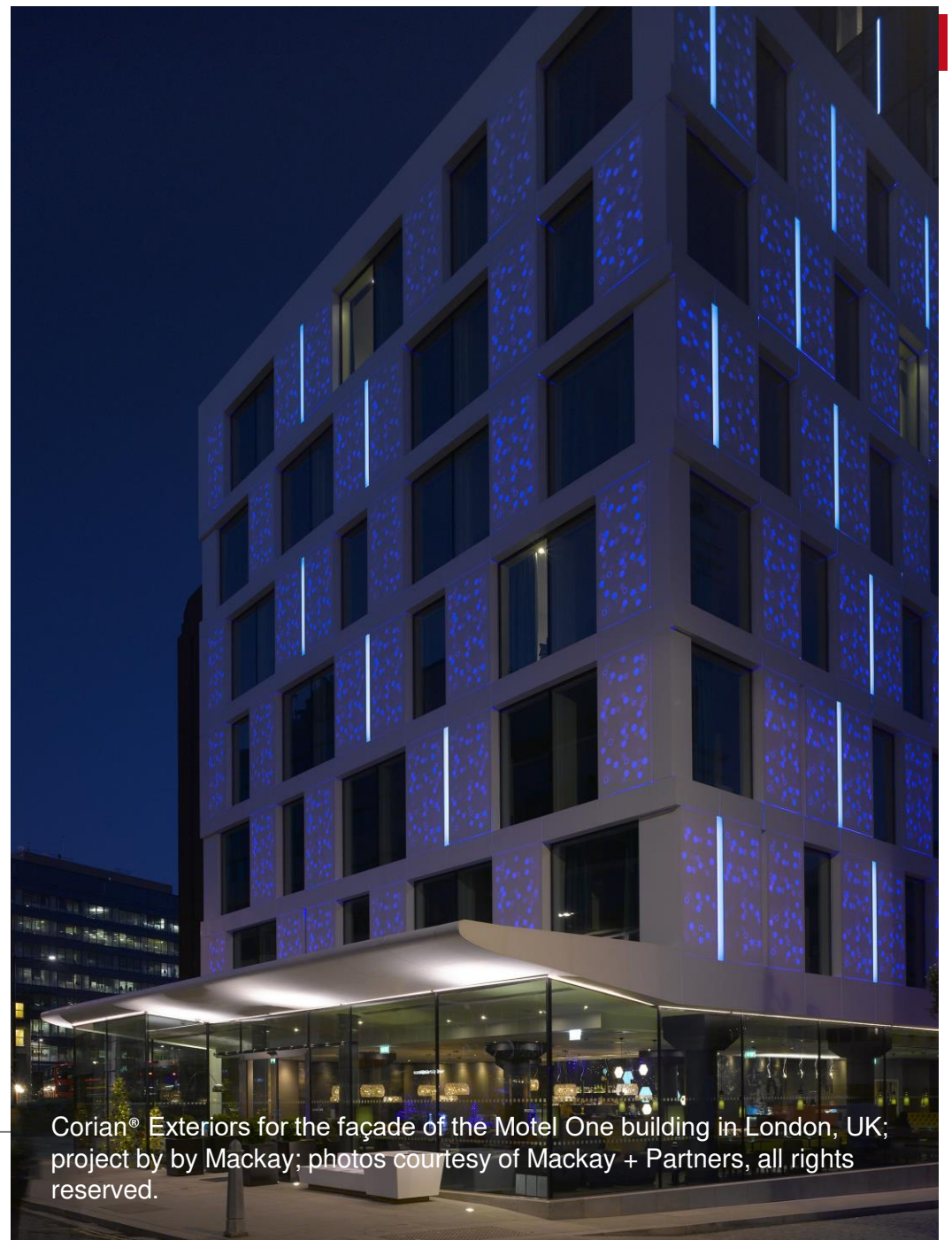
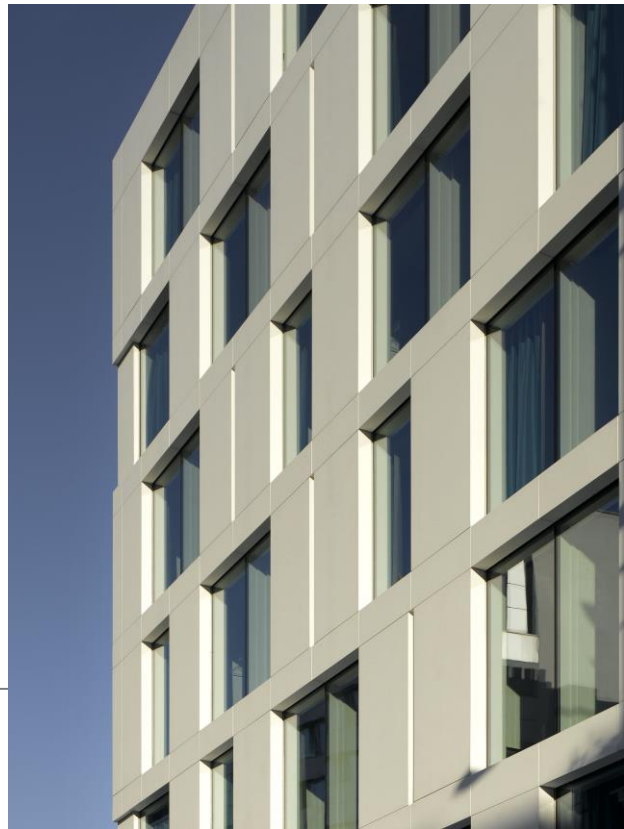


Project name	Afrykarium at Wroclaw Zoo
Localisation	Wroclaw, Poland
Architect	ArC2 Fabryka Projektowa
Installer	CCI Sp. z o.o.
Colour	Deep Nocturne
Size	7000 sqm
Completion date	2014



Corian® Exteriors for the façade of the Afrykarium at the Wroclaw zoo
Wroclaw, Poland; project ArC2 Fabryka Projektowa;
photo courtesy of ArC2 Fabryka Projektowa, all rights reserved

Project name	Hotel _ Motel One
Localisation	London, UK
Architect	Mackay + Partners
Installer	
Colour	Glacier White
Size	1000 sqm
Completion date	2015



Corian® Exteriors for the façade of the Motel One building in London, UK; project by by Mackay; photos courtesy of Mackay + Partners, all rights reserved.

תודה